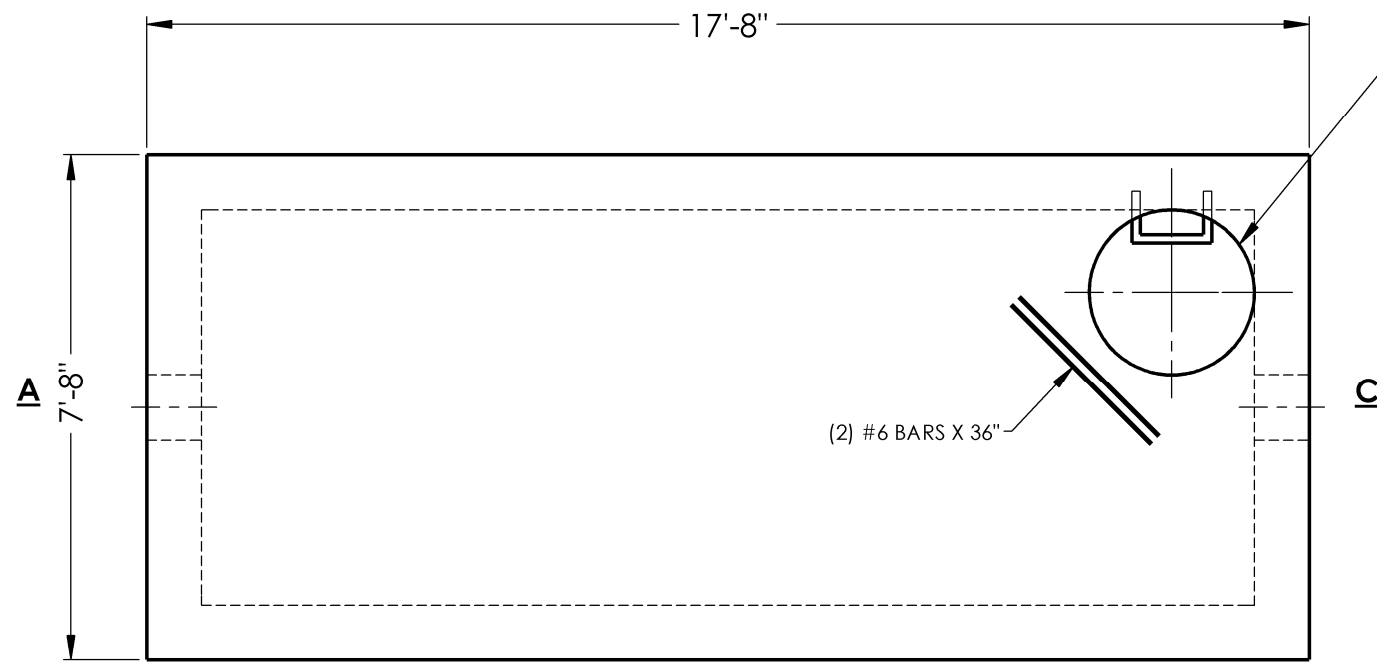


8 7 6 5 4 3 2 1



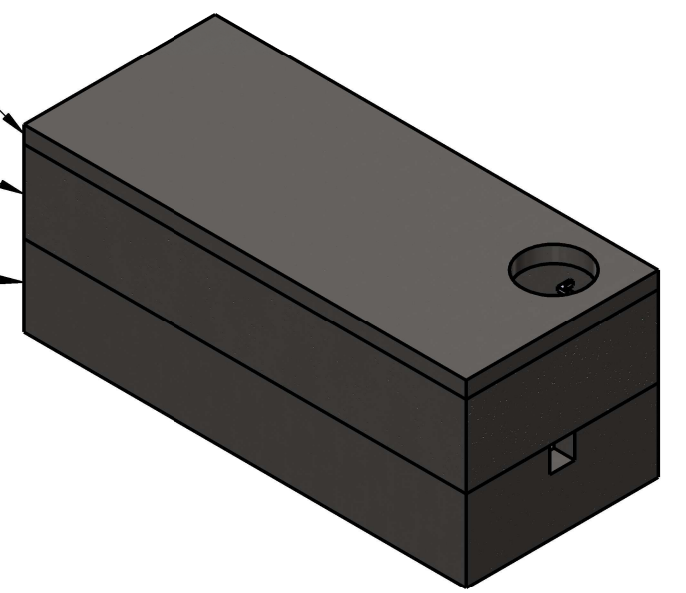
Ø30" ACCESS HOLE

(2) #6 BARS X 36"

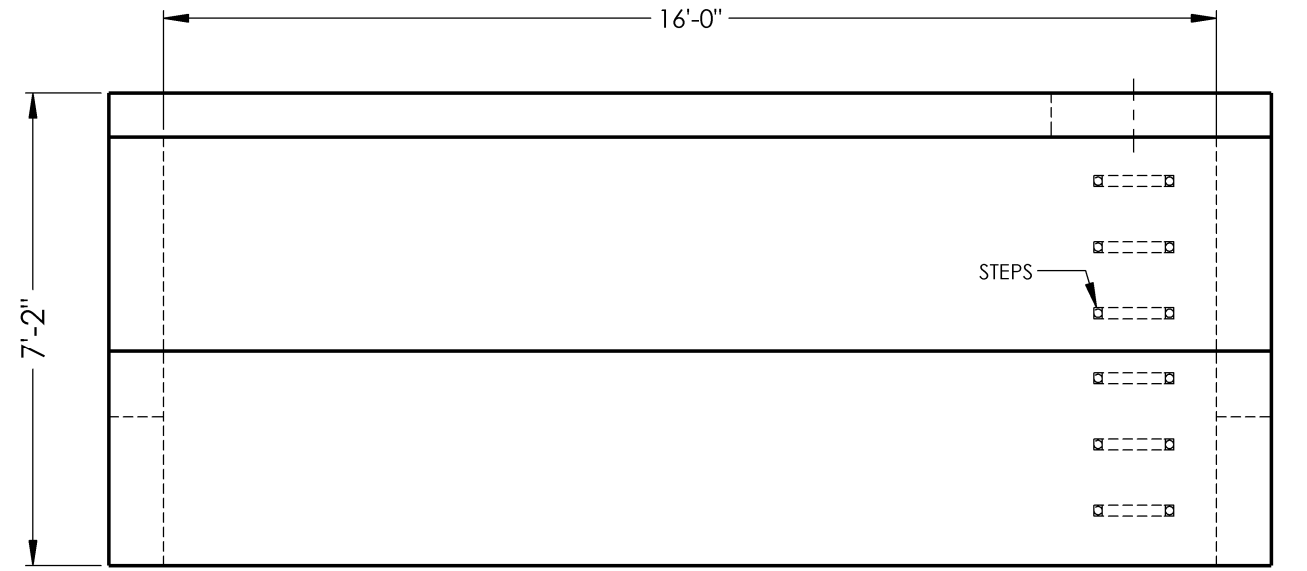
WIL616T  
13054#

WIL616W-39  
19226#

WIL616W-39  
18976#



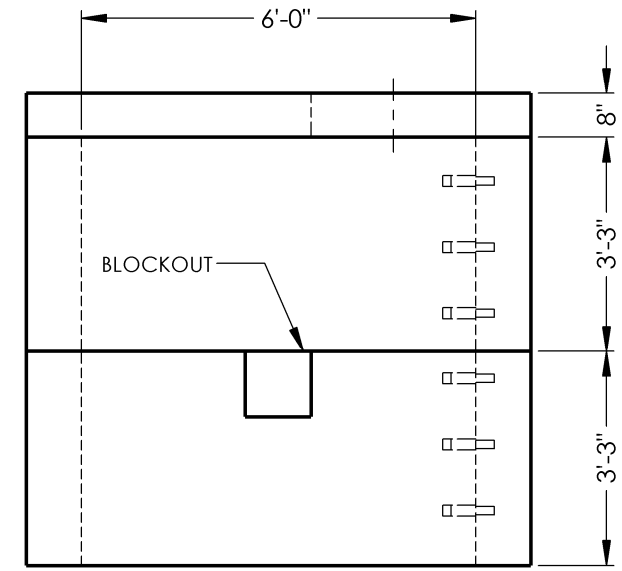
**B**



STEPS

10"

**B**



BLOCKOUT

**C**

**REINFORCEMENT:**

- LID            -#6 BAR @7"O.C. TRANSVERSE
- #6 BAR@10"O.C. LONGITUDINAL  
                  (CENTERED IN LID)
- WALLS        -#4 BAR @12" O.C.E.F. VERTICAL
- (DOUBLE MAT) -#5 BAR@6"O.C.E.F. HORIZONTAL  
                  (1.5" CLR TYP)

\*\*\*\*HS-20 LOADING MAX BURY (5'-0") AS PER "AASHTO" STANDARDS\*\*\*\*



**2215 E. BROOKLYN AVE  
SPOKANE, WA 99217  
TOLL FREE 1-800-888-4573  
(509) 325-4573   FAX (509) 325-5098  
SPOKANE - LEWISTON - YAKIMA  
www.wilbertprecast.com**

DRAWN BY:  
DCR

**TITLE:**

METER VAULT 6'-0" X 16'-0"  
HS-20 LOADING

**SIZE**

**B**

**DWG. NO.**

WIL616

**SCALE:**

NTS

**DATE:**

12/30/2020

8 7 6 5 4 3 2 1